



# Biddeford/Saco Bike/Ped Trail Feasibility Study

Public Meeting #2

March 8, 2022

**Thank you for joining!**

**The meeting will start at 6:00 PM**

**Please direct any questions or comments after the meeting to:  
Jon Kachmar, [jon.kachmar@eastertrail.org](mailto:jon.kachmar@eastertrail.org) (860) 227-0914**



# Biddeford/Saco Bike/Ped Trail Feasibility Study

Public Meeting #2

March 8, 2022

# Welcome!



# Biddeford/Saco Bike/Ped Trail Feasibility Study

Public Meeting #2

March 8, 2022





**Tony Grande**  
Project Manager, VHB



**Branden Roberts**  
Project Engineer, VHB



**Jon Kachmar**  
Eastern Trail



**Ian Gorecki**  
MaineDOT



# Technical Advisory Committee Members

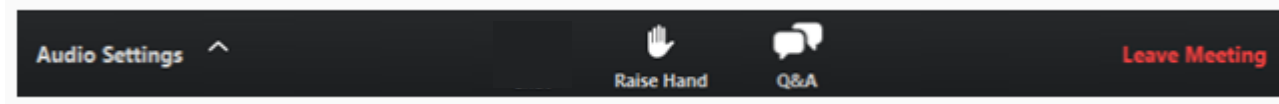
<u>Member</u>	<u>Affiliation</u>
1 Jon Kachmar	Eastern Trail
2 Ian Gorecki	MaineDOT
3 Patrick Adams	MaineDOT
4 Greg Tansley	City of Biddeford
5 Jason Garnham	City of Saco
6 Stephanie Carver	SMPDC
7 Tony Grande	VHB
8 Ethan Flynn	VHB
9 Branden Roberts	VHB

# Meeting Agenda

- Welcome and Introductions (5 min.)
  - Technical Advisory Committee
  - Meeting Logistics
- Study Area (10 min.)
  - Corridor Overview
  - Existing Conditions
- Presentation of Study Findings (40 min.)
  - Conceptual Improvements
    - Section Overview
    - Alternatives Considered
    - Recommended Alternatives
- **Public Input/Q&A** (30 min.)
- Next Steps (5 min.)
  - Project Schedule

# Meeting Logistics

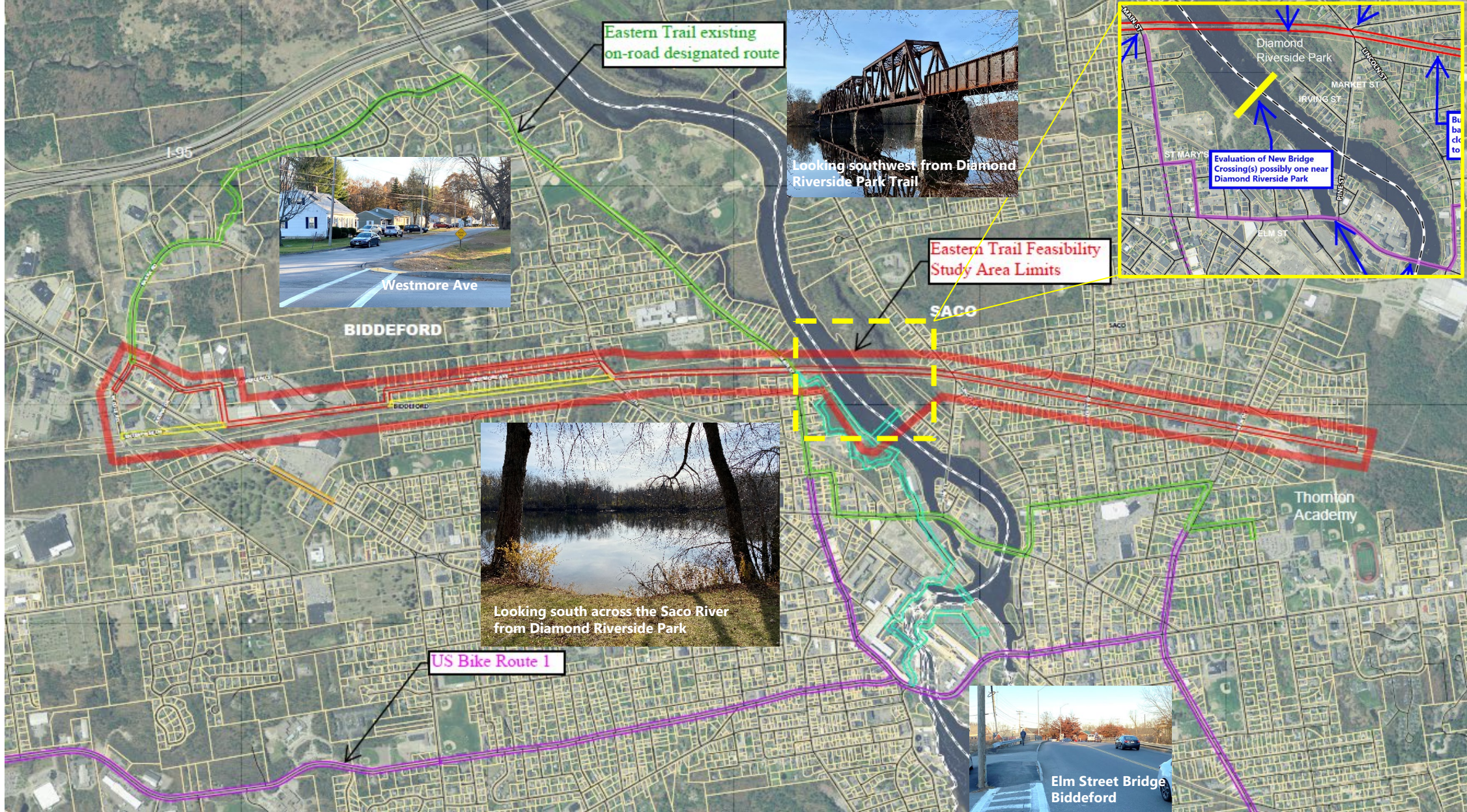
- All attendees muted
- Lots of time for Questions and Answers after the presentation
- Raise/lower your “Hand” to ask a question “live”



- Q&A – type questions/comments directly into the box
- Phoning in...press \*9 to raise your hand
- This meeting is being recorded and will be posted on the Eastern Trail website, along with the presentation.
- Email comments: Jon Kachmar, [jon.kachmar@eastertrail.org](mailto:jon.kachmar@eastertrail.org)

# Project Overview

- **Planning Partnership Initiative (PPI):** Biddeford and Saco, in collaboration with The Eastern Trail Alliance (ETA), Eastern Trail Management District (ETMD), and the Maine Department of Transportation (MaineDOT).
- **The study's purpose:** *evaluate/analyze alternatives to extend the Eastern Trail off-road segments:*
  1. West Cole Road to the R.R. truss bridge over the Saco River in Biddeford (~1.75 miles)
  2. R.R. truss bridge over the Saco River to Thornton Academy in Saco (~1.2 miles)
- **General Scope of Work Tasks**
  - ✓ *Project Kick-Off Meeting with Project Stakeholders and MaineDOT*
  - ✓ *Review Available Data and Assess Current Conditions*
  - ✓ *Evaluate Potential Alternatives*
  - ✓ *Develop Preliminary Recommendations / Develop Draft Report (on-going)*
  - Public and Agency Feedback (on-going)
  - Final Report



# Bicycle/Pedestrian Trail Connectivity Feasibility Study

Biddeford-Saco, Maine



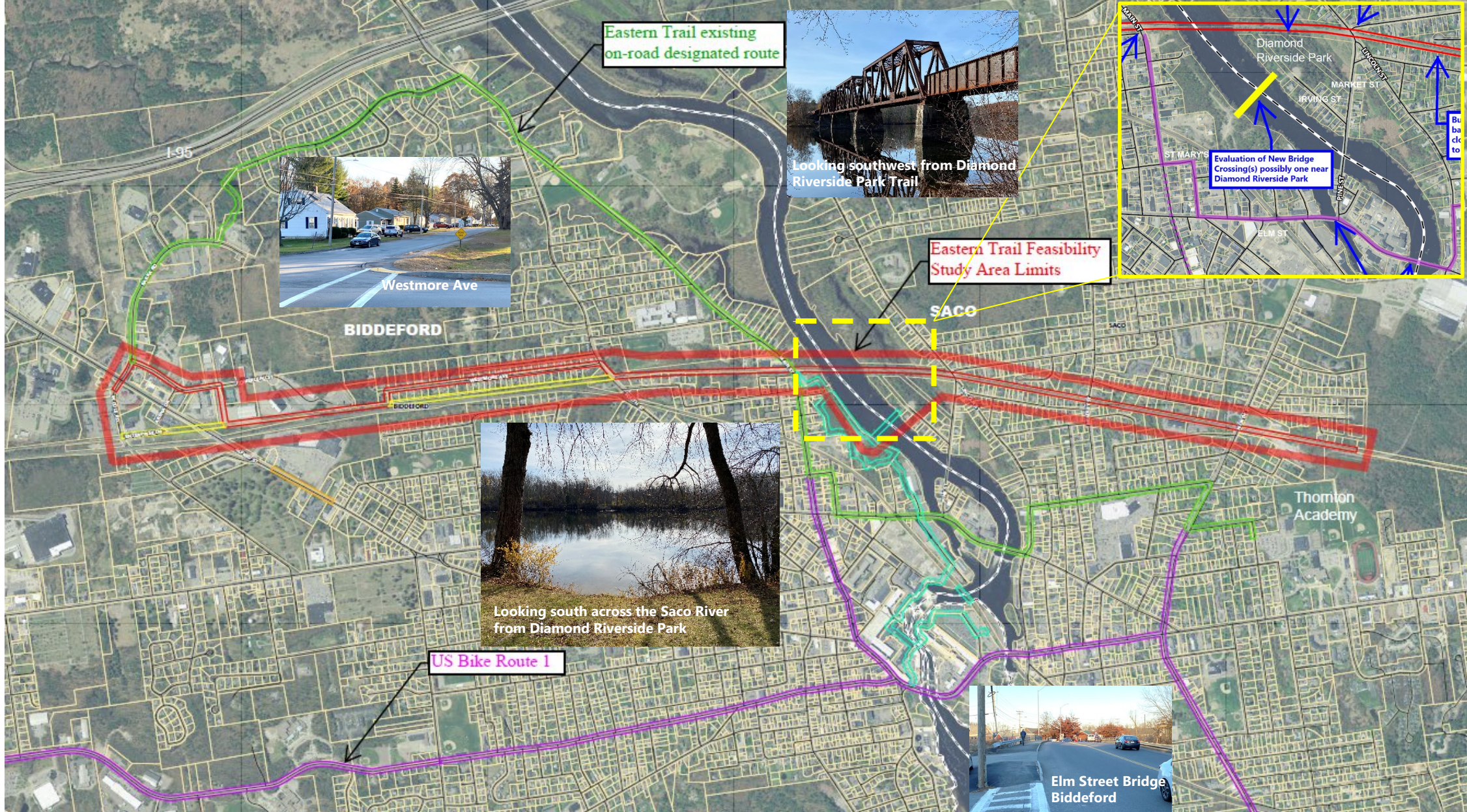
# Public Meeting #1 Recap – November 30, 2021

- Presented the study area, purpose, and goals for the project
- Discussed potential improvements to be considered
- Reviewed existing conditions and project schedule
- Responded to questions and comments from participants



# Study Area – Corridor Overview and Existing Conditions



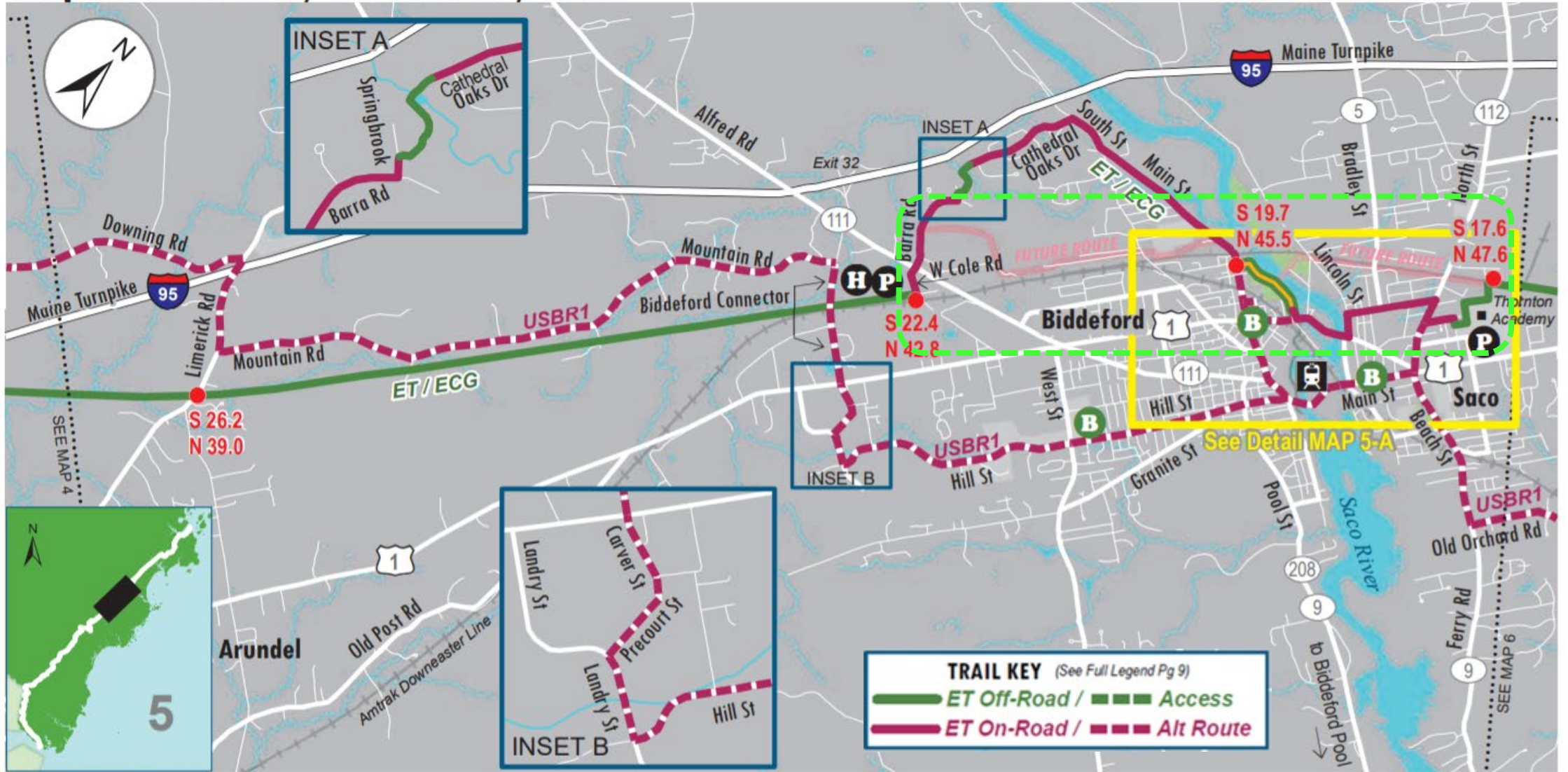


# Bicycle/Pedestrian Trail Connectivity Feasibility Study

Biddeford-Saco, Maine

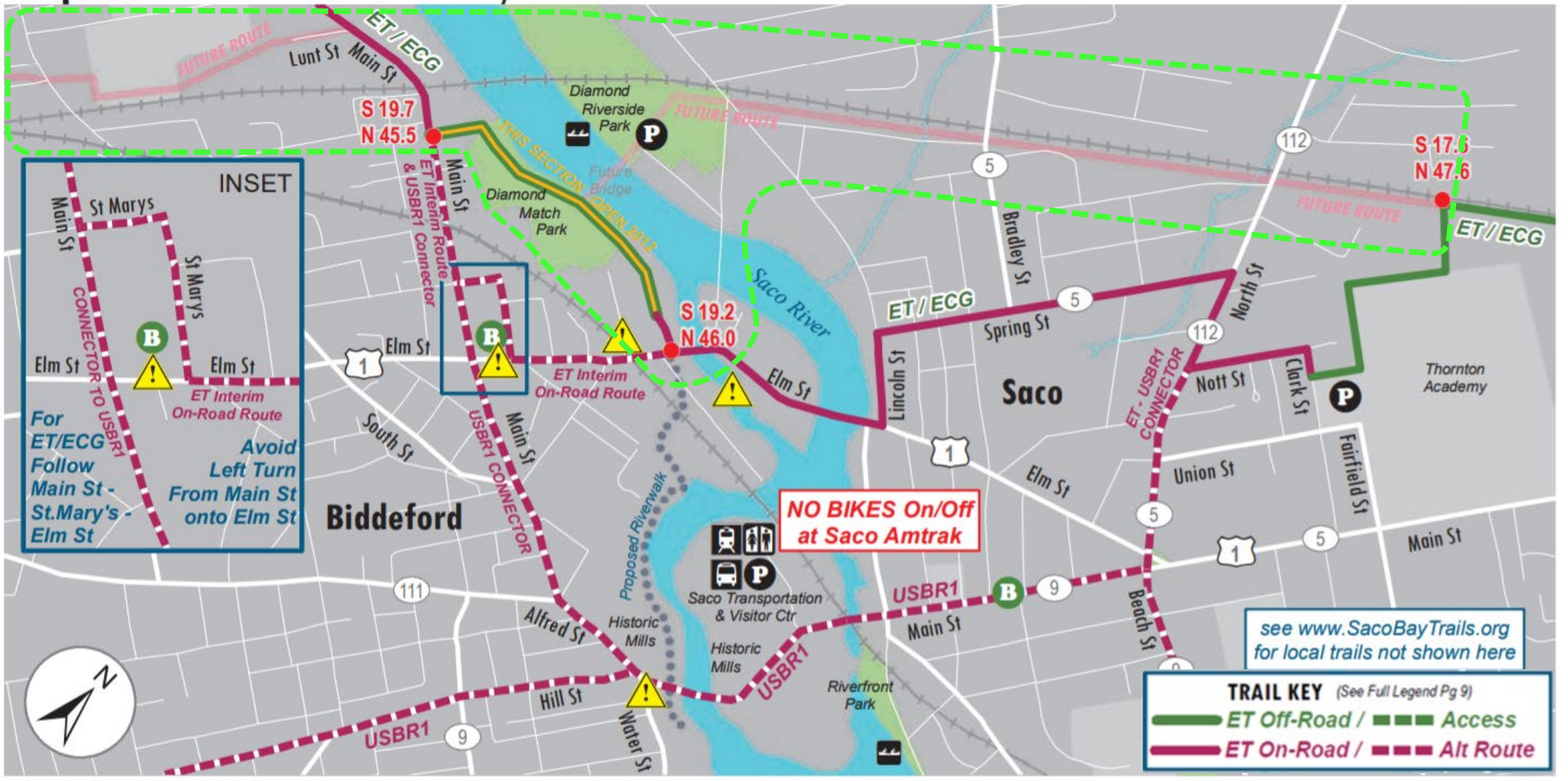
# Map 5 ARUNDEL / BIDDEFORD / SACO

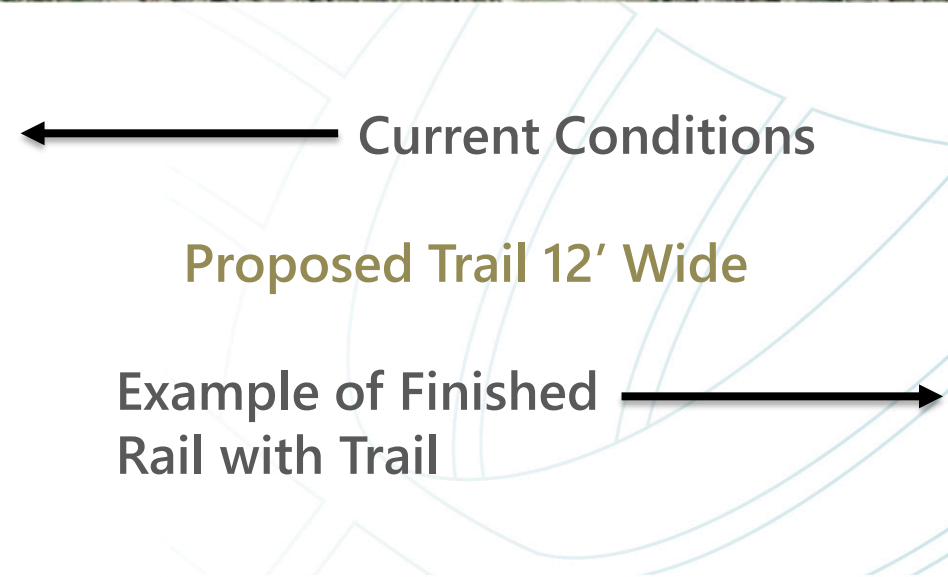
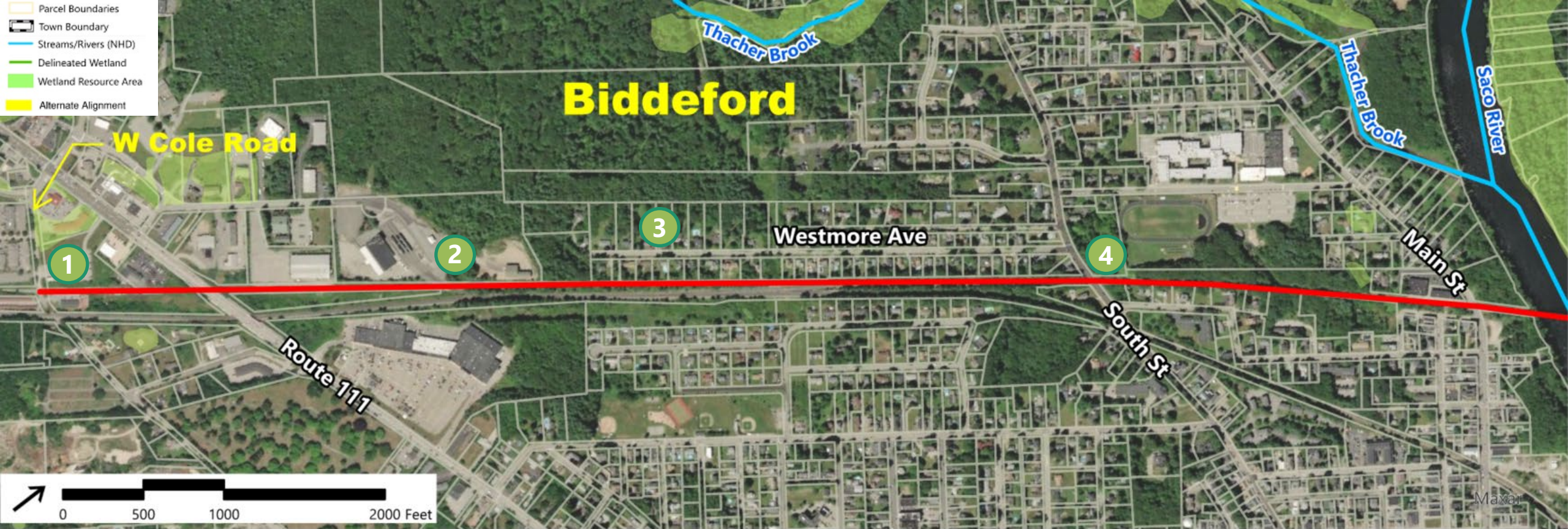
0 2 mi.



# Map 5-A DETAIL - BIDDEFORD / SACO

0  1/2 mi





# Existing Conditions



## 1.) West Cole Road – Southerly Terminus in Biddeford

- Direct Route alternative crosses Five Star Holdings LLC property
  - Requires shifting or crossing RR tracks to cross under Route 111
- Alternate alignment utilizes on-road facility to cross Route 111
  - Crossing of Route 111 at West Cole Road/Barra Road is signalized

## 2.) Railroad Crossing (Route 111) and Rail Spur

- Utility corridor on west side of rail tracks



# Existing Conditions



## 3.) Westmore Ave Alternative

- Existing utility access point off Westmore Ave
- Creates at-grade crossing alternative at South Street
- On-road options could include:
  - Striping upgrades to create shared facility
  - Sidewalk upgrades
  - Adjacent path separated by curb

## 4.) South Street Crossing

- Roadway Crossing Possibilities:
  - Improved safety measures at existing curb breaks
  - Utilize Maplewood Ave and/or BHS property
  - Multiple undeveloped lots on north side of South Street may provide connectivity options
- Below Roadway Grade Possibilities:
  - Existing RR corridor passes under South Street
  - Rail with Trail option is constricted by existing infrastructure



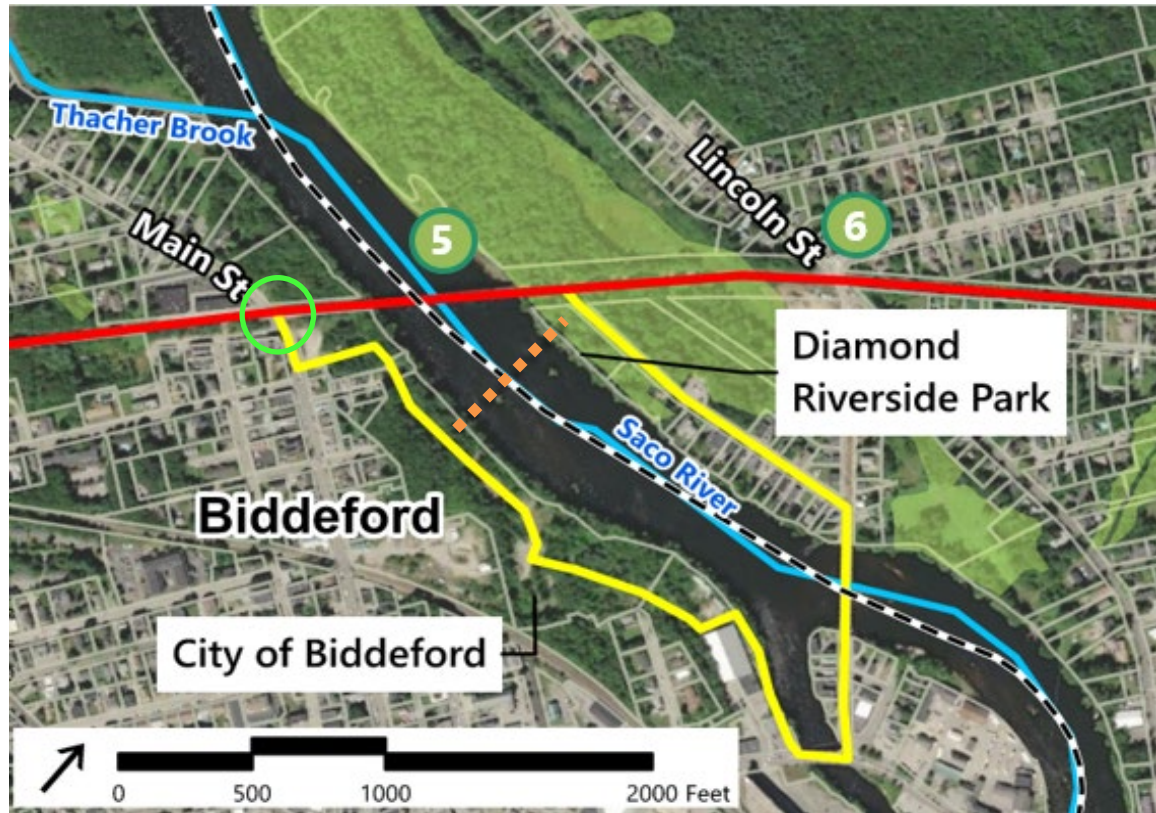


← Current Conditions

Example of Finished Rail with Trail →



# Existing Conditions



## 5.) Saco River Crossing Options

- Replace tracks with trail
- Cantilever trail on RR bridge adjacent to tracks
- Construct **new bridge** east of existing bridge
- Utilize roadways and City owned parcels to construct new connection (yellow line)

## 6.) Lincoln Street Crossing

- Safety improvements to be added



# Existing Conditions

## 7.) North Street Crossing

- Utility station and drive access challenges

## 8.) Thornton Academy – Northerly Terminus in Saco

- Tie into existing trail behind sports fields
- Possibly require an additional RR crossing



# Concept Plan Development – Design Criteria

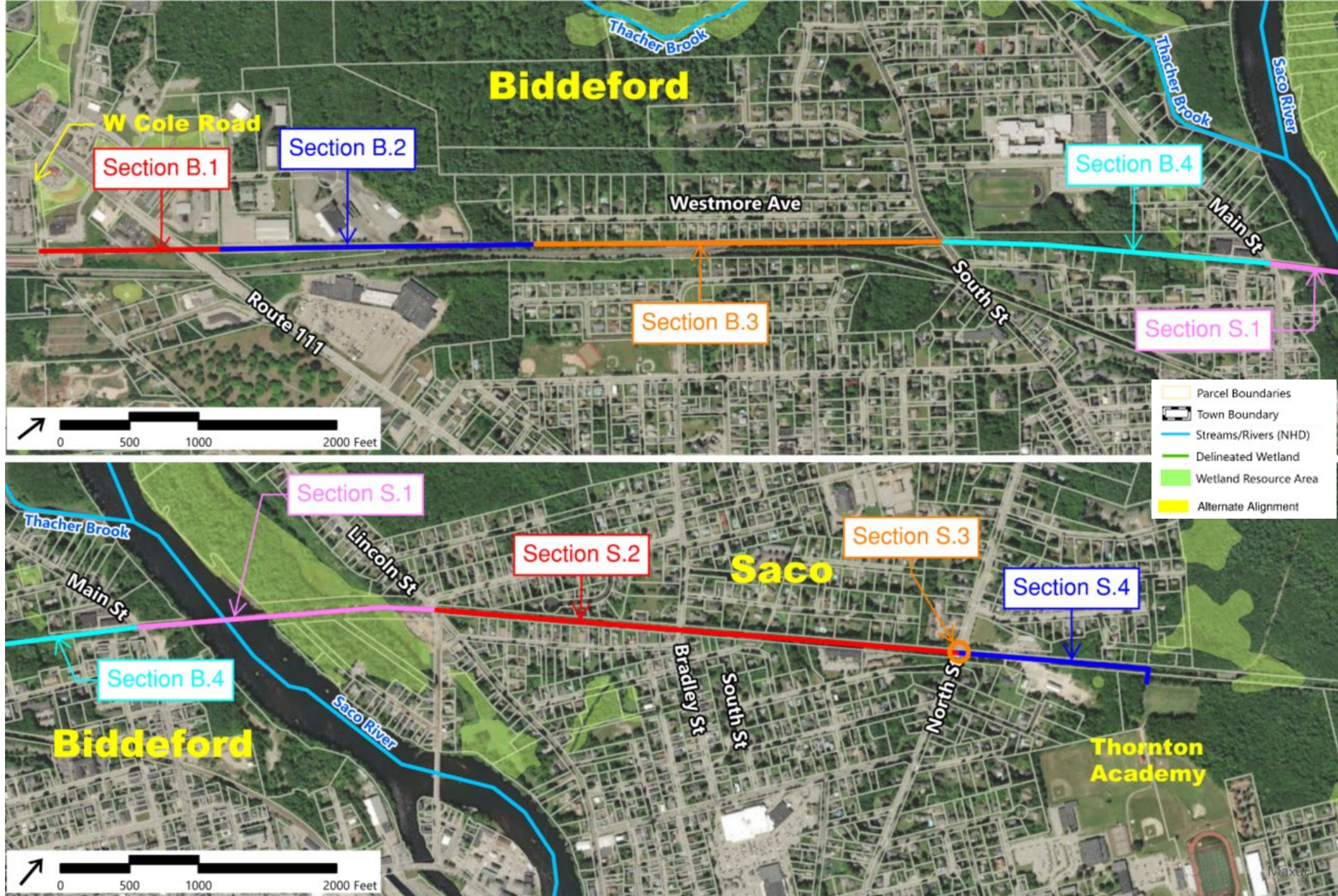
- Proposed trail typically **12 ft. wide**, unpaved (like existing ET)
- **No motorized vehicles** permitted
- Minimal proposed grade changes, gradual slope adjustments where needed (desired max. 5%)
- **ADA compliance** for all crossings and sidewalk ramps
- **Rail with Trail**
- **Retaining walls** incorporated at selected locations
- **Bridge Improvements** for crossing the Saco River

# Study Findings

## Conceptual Improvements

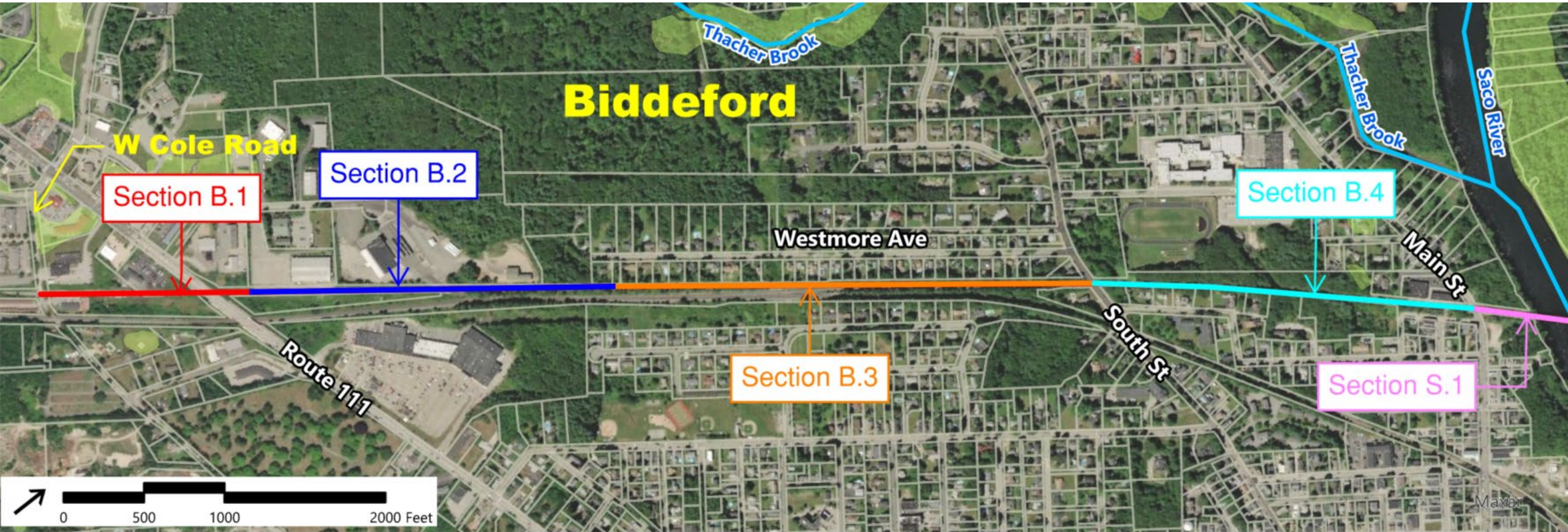
Section Overview,  
Alternatives Considered,  
and Recommended Alternatives





**Bicycle/Pedestrian Trail Connectivity Feasibility Study – Corridor Breakout**  
Biddeford and Saco, Maine





# Biddeford Segment

## (West Cole Road to Main Street)

### Preliminary Alternatives Comparison Matrix

Section B.1	Aspect	Alt. B.1.1 - On-Road Connection	Alt. B.1.2 - Five Star Holdings to Rail Corridor	Alt. B.1.3 - Rail Corridor	B.1.4 On-Road Connection to 5 Points Shopping Center
West Cole Road to Ice Arena (~0.28 Miles)	Satisfies Purpose & Need	Relatively	Possibly/Eventually	Yes	No
	Safety & Mobility	Dedicated space for bikes/peds adjacent to roadway with Route 111 Crossing	Dedicated path for bikes/peds	Dedicated path for bikes/peds	Moderate improvement Shared roadway options with Route 111 and R.R. Crossing
	ROW, Env. & Utility Impacts	ROW and Utility Impacts Anticipated	ROW Impacts Anticipated	Possible Env. Impacts Anticipated	ROW and Possible Utility Impacts Anticipated
	Constructability	Moderate Effort and Traffic Impacts	Moderate Effort and R.R. Impacts	Moderate Effort and R.R. Impacts	Moderate Effort and Minimal Traffic Impacts
	Estimated Cost	Low	High	High	Moderate

Section B.2	Aspect	Alt. B.2.1 - Utility Corridor	Alt. B.2.2 - Rail Corridor	Alt. B.2.3 - 5 Points Shopping Center	
Ice Arena to Westmore Ave. (~0.4 Miles)	Satisfies Purpose & Need	Yes	Yes	Yes	
	Safety & Mobility	Dedicated path for bikes/peds	Dedicated path for bikes/peds	Dedicated path for bikes/peds with R.R. Crossing	
	ROW, Env. & Utility Impacts	None anticipated	Possible Env. Impacts Anticipated	ROW Impacts Anticipated	
	Constructability	Minimal Effort	Moderate Effort	Moderate Effort and R.R. Impacts	
	Estimated Cost	Low	Moderate	High	

Section B.3	Aspect	Alt. B.3.1 - Westmore Avenue Connection	Alt. B.3.2 - Freight Rail with Trail	Alt. B.3.3 - Remove Freight Rail for Trail	Alt. B.3.4 - Amtrack Rail with Trail
Westmore Ave to South Street (~0.55 Miles)	Satisfies Purpose & Need	No	Yes	Yes	Yes
	Safety & Mobility	Moderate improvement Shared roadway options	Dedicated path for bikes/peds	Dedicated path for bikes/peds	Dedicated path for bikes/peds with R.R. Crossing
	ROW, Env. & Utility Impacts	Possible ROW or Utility Impacts Anticipated	ROW and Possible Env. Impacts Anticipated	Freight Rail Line Services Eliminated	Possible Env. Impacts Anticipated
	Constructability	Minimal Effort and Traffic Impacts	Major Effort	Moderate Effort if Approved by R.R.	Moderate Effort and R.R. Impacts
	Estimated Cost	Low	Very High	Moderate	High

Section B.4	Aspect	Alt. B.4.1 - On-Road Connection	Alt. B.4.2 - Freight Rail with Trail	Alt. B.4.3 - Remove Freight Rail for Trail	
South Street to Main Street (~0.45 Miles)	Satisfies Purpose & Need	No	Yes	Yes	
	Safety & Mobility	Moderate improvement Shared roadway options	Dedicated path for bikes/peds	Dedicated path for bikes/peds	
	ROW, Env. & Utility Impacts	Possible ROW or Utility Impacts Anticipated	Possible ROW and Env. Impacts Anticipated	Freight Rail Line Services Eliminated	
	Constructability	Minimal Effort and Traffic Impacts	Moderate Effort	Moderate Effort if Approved by R.R.	
	Estimated Cost	Low	Moderate	Moderate	

**Purpose & Need:**

*Develop a continuous bicycle and pedestrian facility that will safely accommodate all non-motorized users, within the project study limits.*

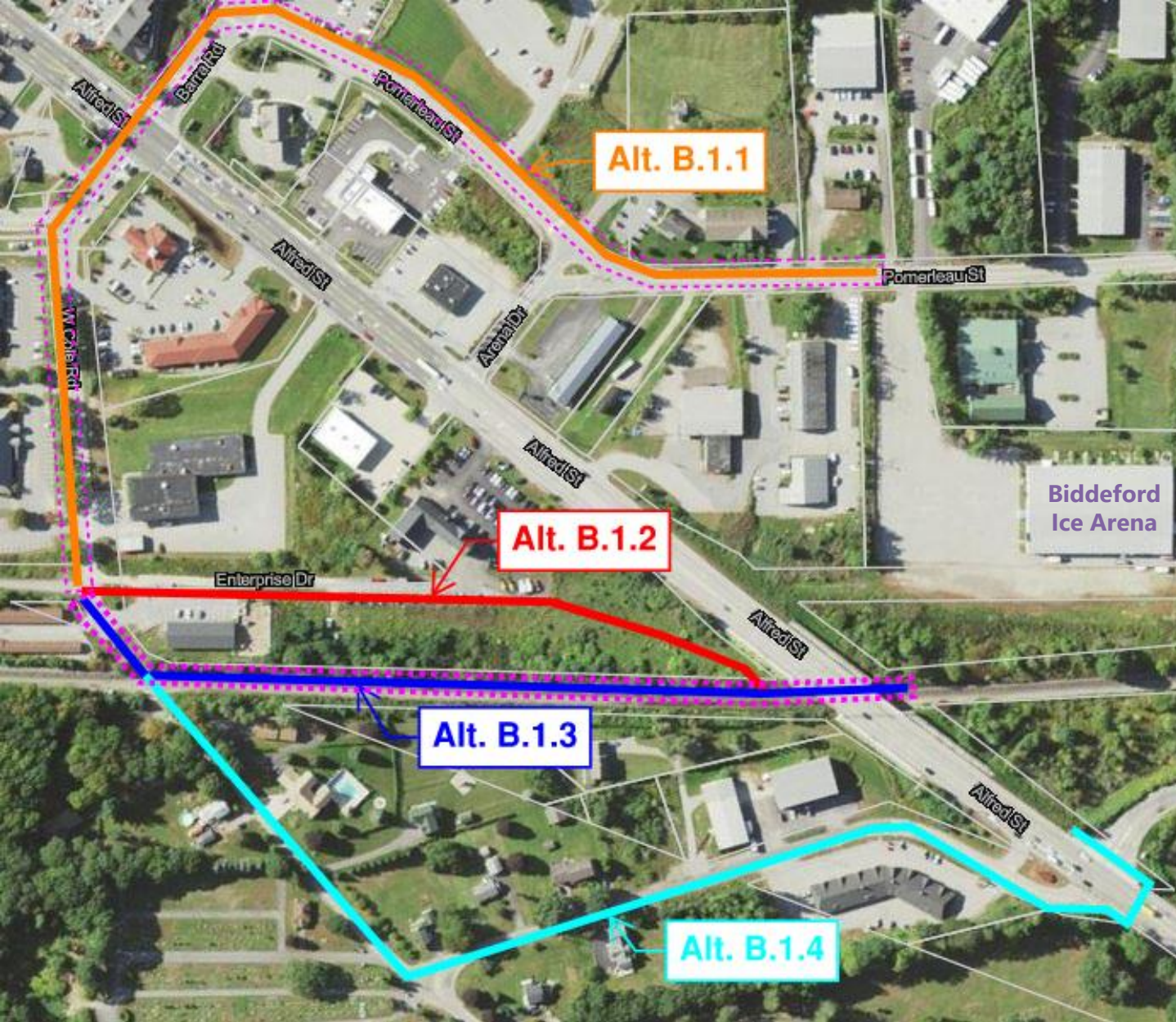
Feature Color Coding:	More Desirable	Neutral	Less Desirable	Not Considered
-----------------------	----------------	---------	----------------	----------------

**Recommended**

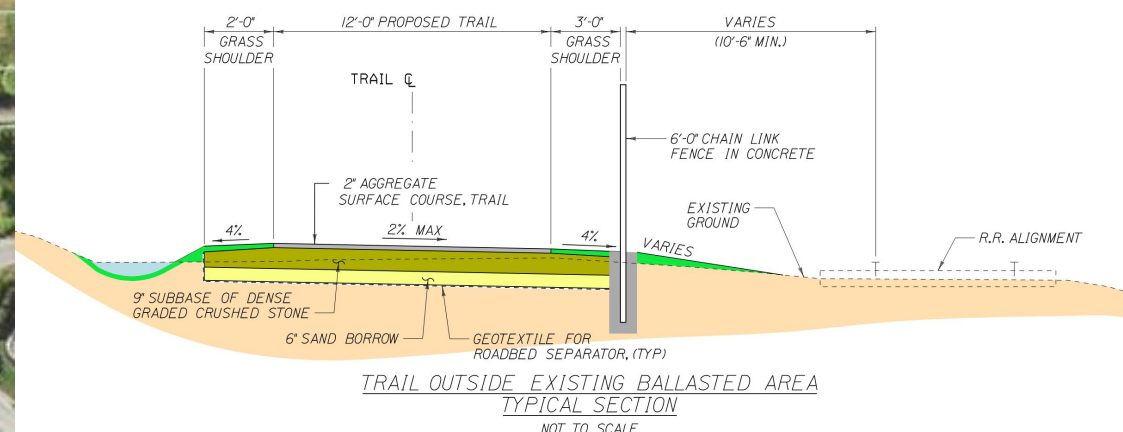
- Alternative category ratings are relative to the section being analyzed
- The Amtrak and Saco Freight Rail lines are active RR corridors
- Although the removal of the Saco Freight Rail Line for the Eastern Trail was initially evaluated, it has been dismissed from the evaluation at this time due to the overwhelming desire for the rail to continue servicing that line.

# Section B.1

(West Cole Road to Biddeford Ice Arena ~0.28 Miles)



Aspect	Alt. B.1.1 - On-Road Connection	Alt. B.1.2 - Five Star Holdings to Rail Corridor	Alt. B.1.3 - Rail Corridor	B.1.4 On-Road Connection to 5 Points Shopping Center
Satisfies Purpose & Need	Relatively	Possibly/Eventually	Yes	No
Safety & Mobility	Dedicated space for bikes/peds adjacent to roadway with Route 111 Crossing	Dedicated path for bikes/peds	Dedicated path for bikes/peds	Moderate improvement Shared roadway options with Route 111 and R.R. Crossing
ROW, Env. & Utility Impacts	ROW and Utility Impacts Anticipated	ROW Impacts Anticipated	Possible Env. Impacts Anticipated	ROW and Possible Utility Impacts Anticipated
Constructability	Moderate Effort and Traffic Impacts	Moderate Effort and R.R. Impacts	Moderate Effort and R.R. Impacts	Moderate Effort and Minimal Traffic Impacts
Estimated Cost	Low	High	High	Moderate



# Section B.1

(West Cole Road to Biddeford Ice Arena ~1.82 Miles)

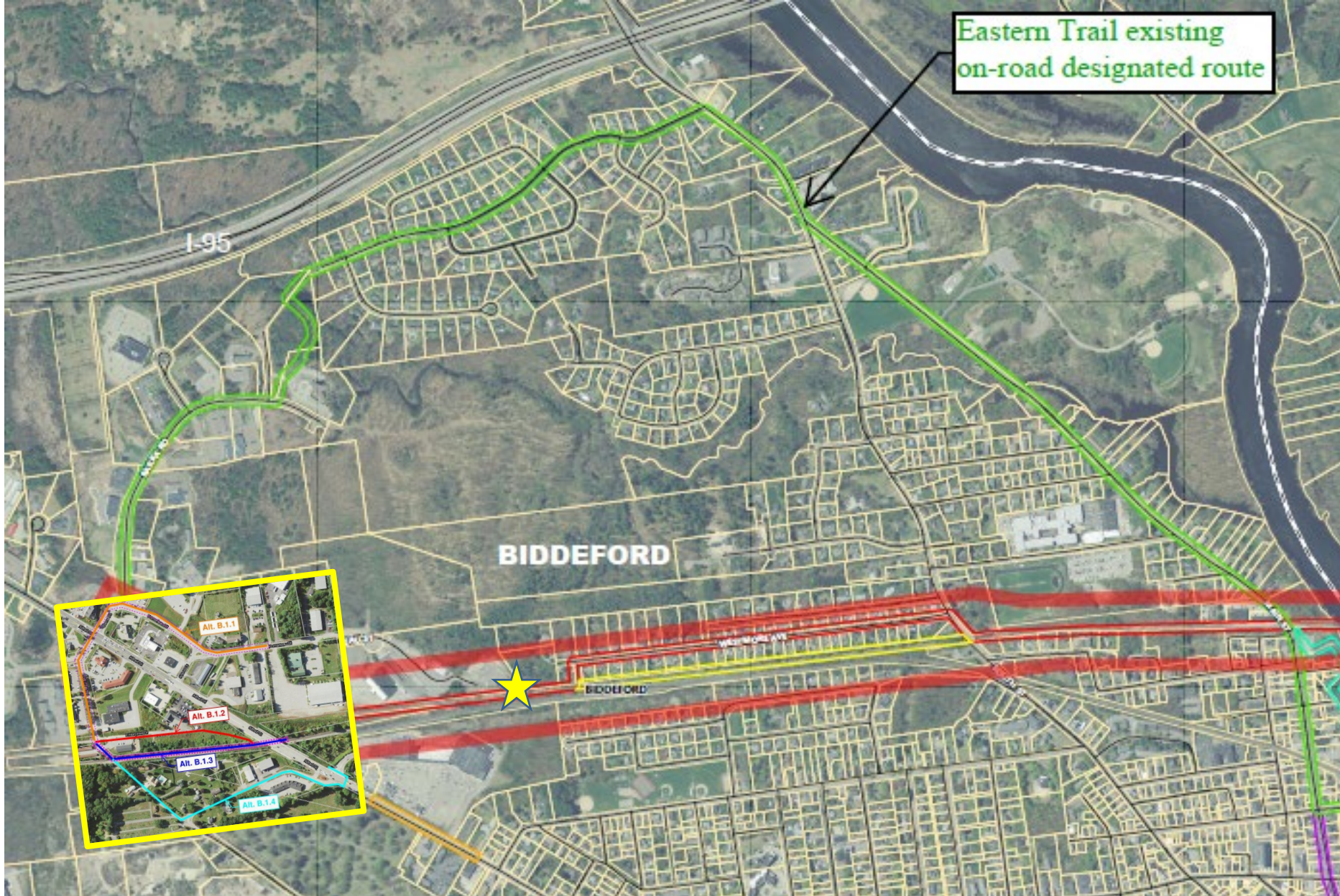


*Amtrak Rail Corridor Under Route 111*



Image capture: Jun 2019 © 2022 Google





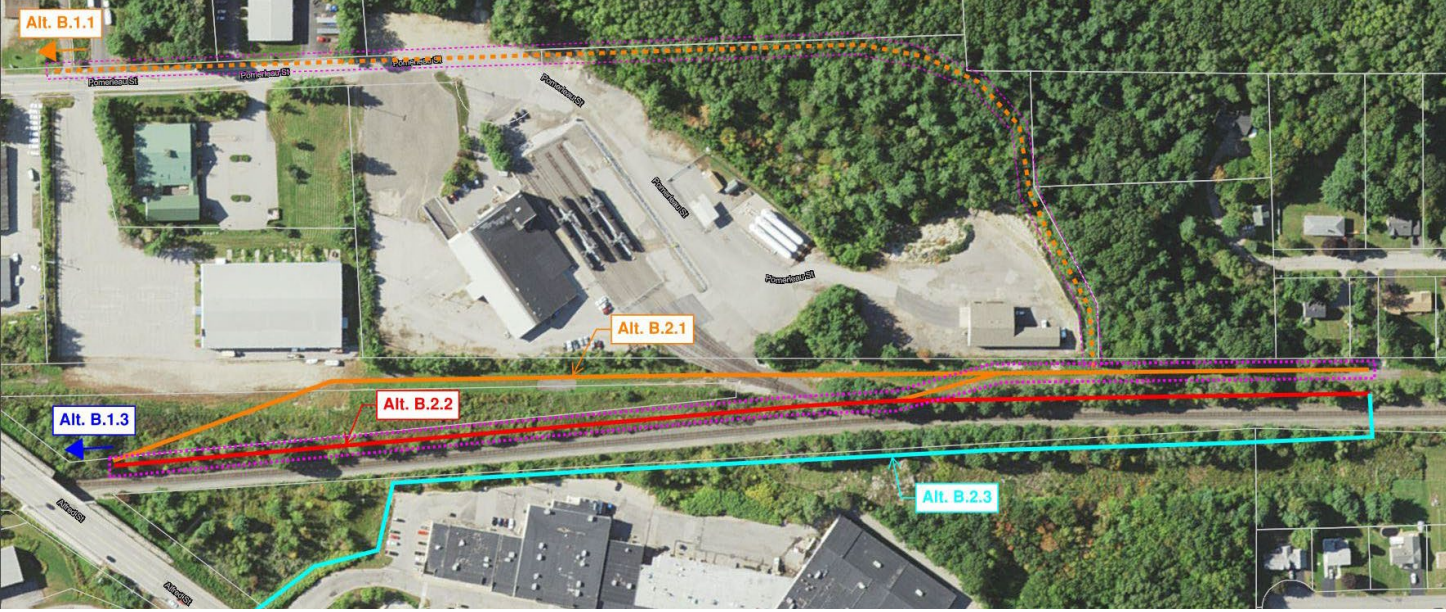
# Bicycle/Pedestrian Trail Connectivity Feasibility Study

Biddeford-Saco, Maine

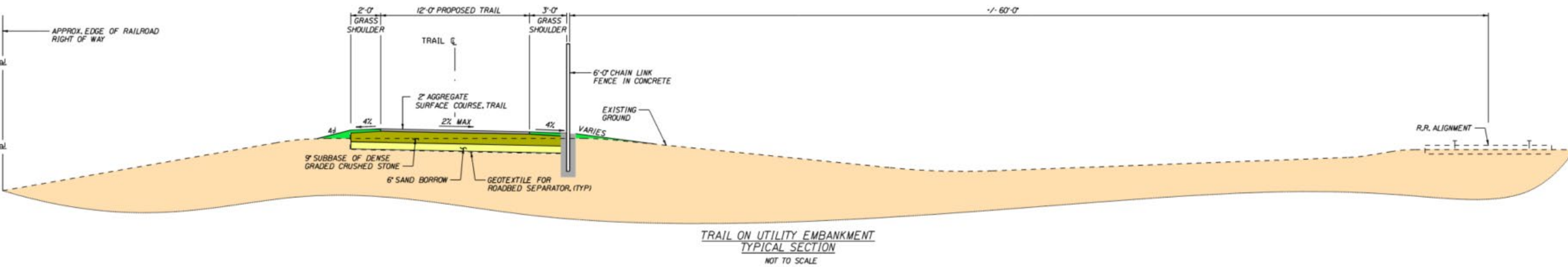


# Section B.2

(Biddeford Ice Arena to Westmore Avenue ~0.4 Miles)

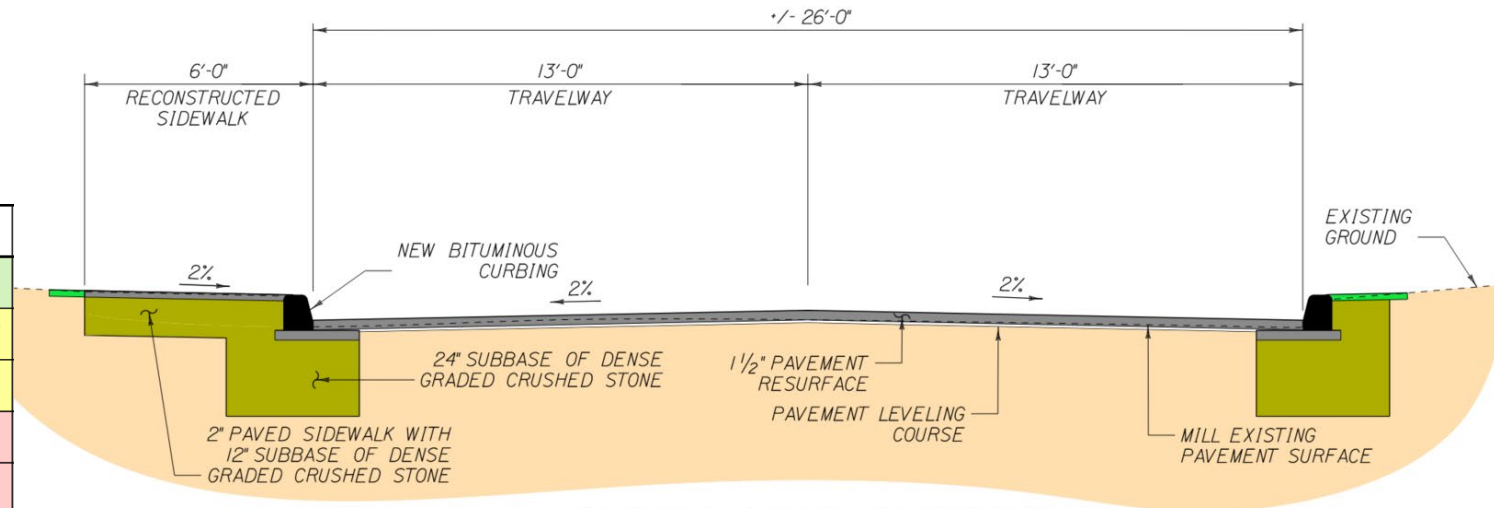
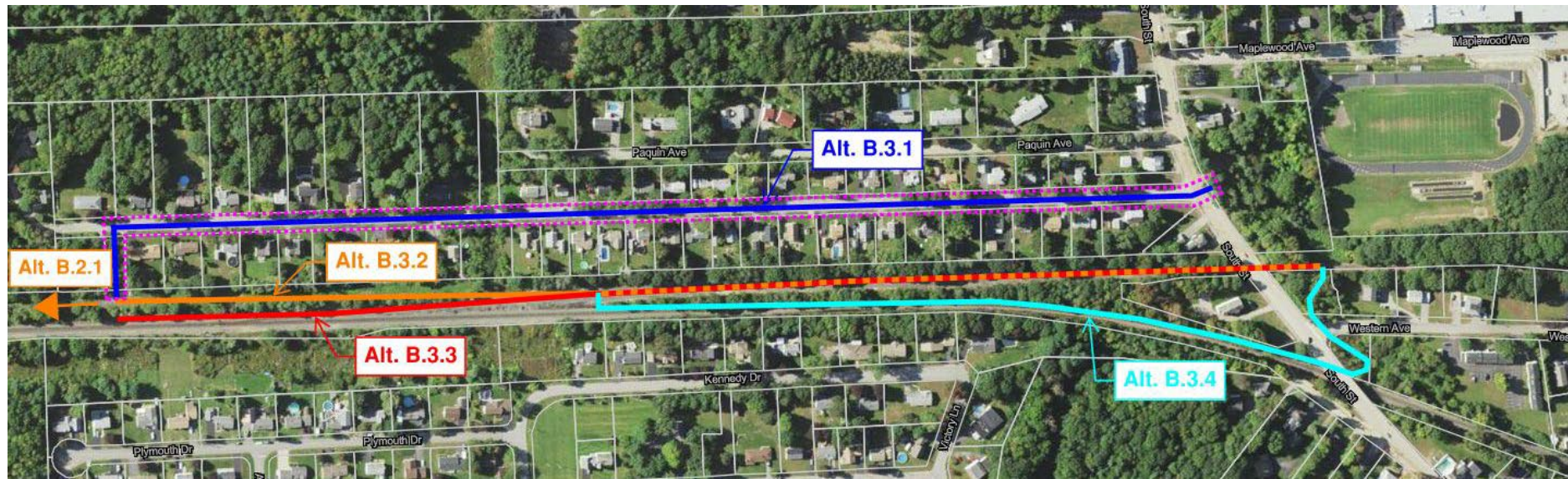


Aspect	Alt. B.2.1 - Utility Corridor	Alt. B.2.2 - Rail Corridor	Alt. B.2.3 - 5 Points Shopping Center
Satisfies Purpose & Need	Yes	Yes	Yes
Safety & Mobility	Dedicated path for bikes/peds	Dedicated path for bikes/peds	Dedicated path for bikes/peds with R.R. Crossing
ROW, Env. & Utility Impacts	None anticipated	Possible Env. Impacts Anticipated	ROW Impacts Anticipated
Constructability	Minimal Effort	Moderate Effort	Moderate Effort and R.R. Impacts
Estimated Cost	Low	Moderate	High



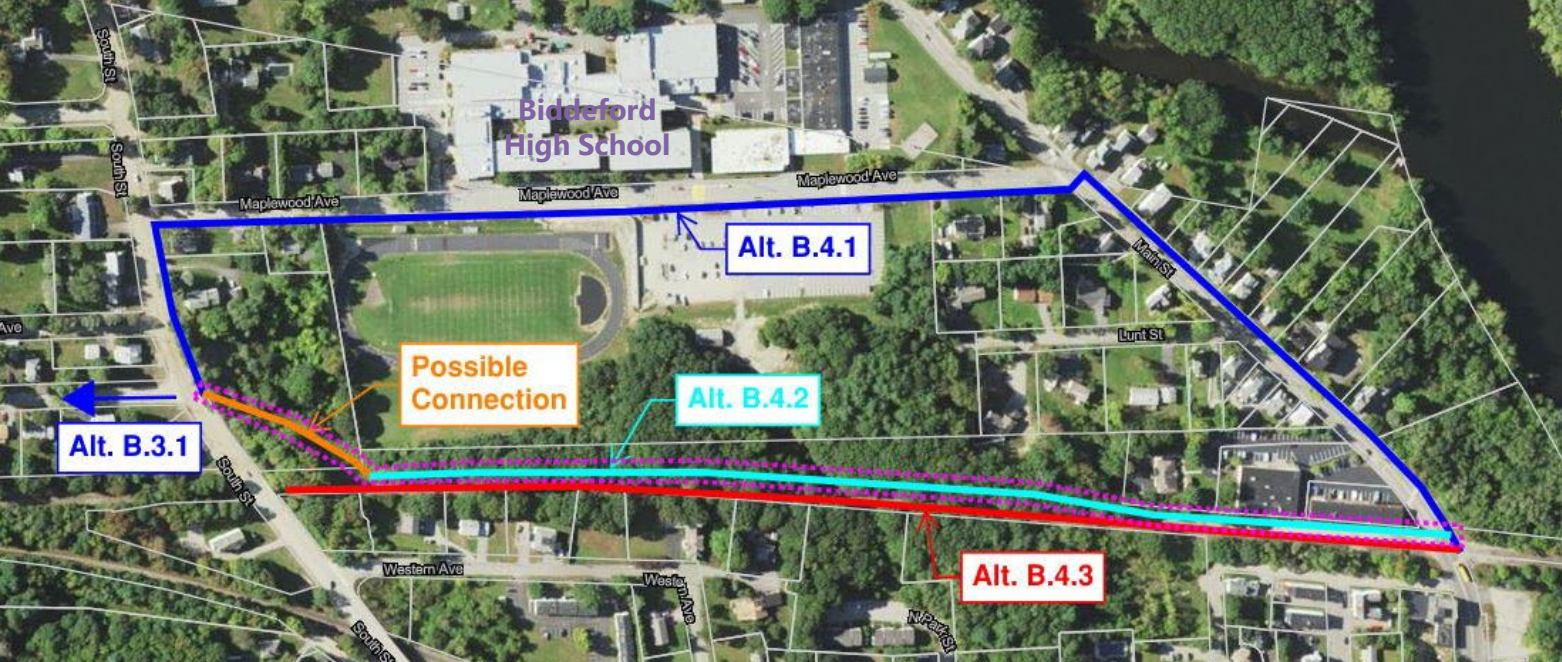
# Section B.3

(Westmore Avenue to South Street ~0.55 Miles)



Aspect	Alt. B.3.1 - Westmore Avenue Connection	Alt. B.3.2 - Freight Rail with Trail	Alt. B.3.3 - Remove Freight Rail for Trail	Alt. B.3.4 - Amtrack Rail with Trail
Satisfies Purpose & Need	No	Yes	Yes	Yes
Safety & Mobility	Moderate improvement Shared roadway options	Dedicated path for bikes/peds	Dedicated path for bikes/peds	Dedicated path for bikes/peds with R.R. Crossing
ROW, Env. & Utility Impacts	Possible ROW or Utility Impacts Anticipated	ROW and Possible Env. Impacts Anticipated	Freight Rail Line Services Eliminated	Possible Env. Impacts Anticipated
Constructability	Minimal Effort and Traffic Impacts	Major Effort	Moderate Effort if Approved by R.R.	Moderate Effort and R.R. Impacts
Estimated Cost	Low	Very High	Moderate	High

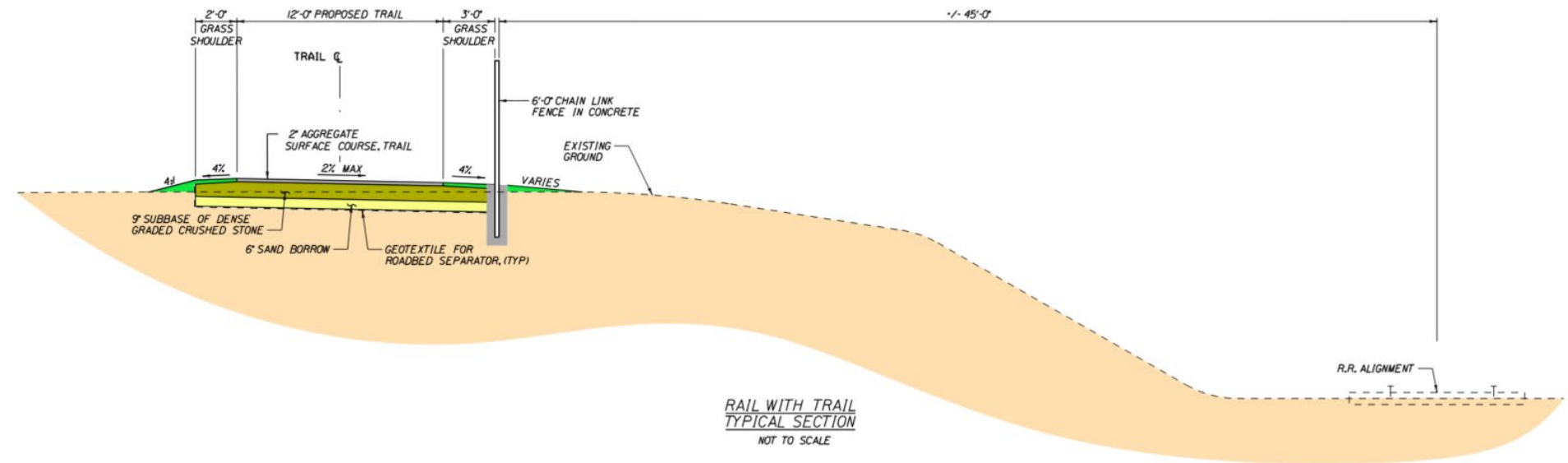




# Section B.4

(South Street to Main Street ~0.45 Miles)

Aspect	Alt. B.4.1 - On-Road Connection	Alt. B.4.2 - Freight Rail with Trail	Alt. B.4.3 - Remove Freight Rail for Trail
Satisfies Purpose & Need	No	Yes	Yes
Safety & Mobility	Moderate improvement Shared roadway options	Dedicated path for bikes/peds	Dedicated path for bikes/peds
ROW, Env. & Utility Impacts	Possible ROW or Utility Impacts Anticipated	Possible ROW and Env. Impacts Anticipated	Freight Rail Line Services Eliminated
Constructability	Minimal Effort and Traffic Impacts	Moderate Effort	Moderate Effort if Approved by R.R.
Estimated Cost	Low	Moderate	Moderate





# Saco Segment

(Main Street, Biddeford to Thornton Academy in Saco)

## Preliminary Alternatives Comparison Matrix

Section S.1	Aspect	Alt. S.1.1 - On-Road Connection	Alt. S.1.2 - Freight Rail with Trail on Existing Bridge	Alt. S.1.3 - Remove Freight Rail for Trail on Existing Bridge	Alt. S.1.4 - New Trail Bridge
Saco River Crossing (~0.4 Miles)	Satisfies Purpose & Need	No	Yes	Yes	Yes
	Safety & Mobility	Moderate improvement Shared roadway options	Dedicated path for bikes/peds	Dedicated path for bikes/peds	Dedicated path for bikes/peds
	ROW, Env. & Utility Impacts	Possible ROW Impacts Anticipated	Moderate Environmental Impacts Anticipated	Freight Rail Line Services Eliminated	Major Environmental Impacts
	Constructability	Minor Effort	Moderate Effort	Moderate Effort	Major Effort
	Estimated Cost	Low	High	Moderate	Very High
Section S.2	Aspect	Alt. S.2.1 - Freight Rail with Trail	Alt. S.2.2 - Remove Freight Rail for Trail		
Lincoln Street to Bradley Street to North Street (~0.7 Miles)	Satisfies Purpose & Need	Yes	Yes		
	Safety & Mobility	Dedicated path for bikes/peds with limitations due to RR	Dedicated path for bikes/peds		
	ROW, Env. & Utility Impacts	Possible Environmental Impacts Anticipated	Freight Rail Line Services Eliminated		
	Constructability	Moderate Effort	Minor Effort		
	Estimated Cost	Moderate	Moderate		
Section S.3	Aspect	Alt. S.3.1 - Railroad Crossing	Alt. S.3.2 - Remove Freight Rail for Trail	Alt. S.3.3 - Re-align Freight Rail	
North Street Crossing	Satisfies Purpose & Need	Yes	Yes	Yes	
	Safety & Mobility	Dedicated path for bikes/peds with additional RR crossings	Dedicated path for bikes/peds	Dedicated path for bikes/peds	
	ROW, Env. & Utility Impacts	None Anticipated	Freight Rail Line Services Eliminated	Freight Rail Line Services Impacted	
	Constructability	Minor Effort	Moderate Effort	Major Effort	
	Estimated Cost	Low	Moderate	High	
Section S.4	Aspect	Alt. S.4.1 - Freight Rail with Trail to the West	Alt. S.4.2 - Remove Freight Rail for Trail	Alt. S.4.3 - Re-align Freight Rail	
North Street to Thornton Academy (~0.25 Miles)	Satisfies Purpose & Need	Yes	Yes	Yes	
	Safety & Mobility	Dedicated path for bikes/peds with additional RR crossings	Dedicated path for bikes/peds	Dedicated path for bikes/peds	
	ROW, Env. & Utility Impacts	None Anticipated	Freight Rail Line Services Eliminated	Freight Rail Line Services Impacted	
	Constructability	Minor Effort with Additional RR Crossing	Moderate Effort	Minor Effort	
	Estimated Cost	Low	Moderate	Moderate	

**Purpose & Need:**

*Develop a continuous bicycle and pedestrian facility that will safely accommodate all non-motorized users, within the project study limits.*

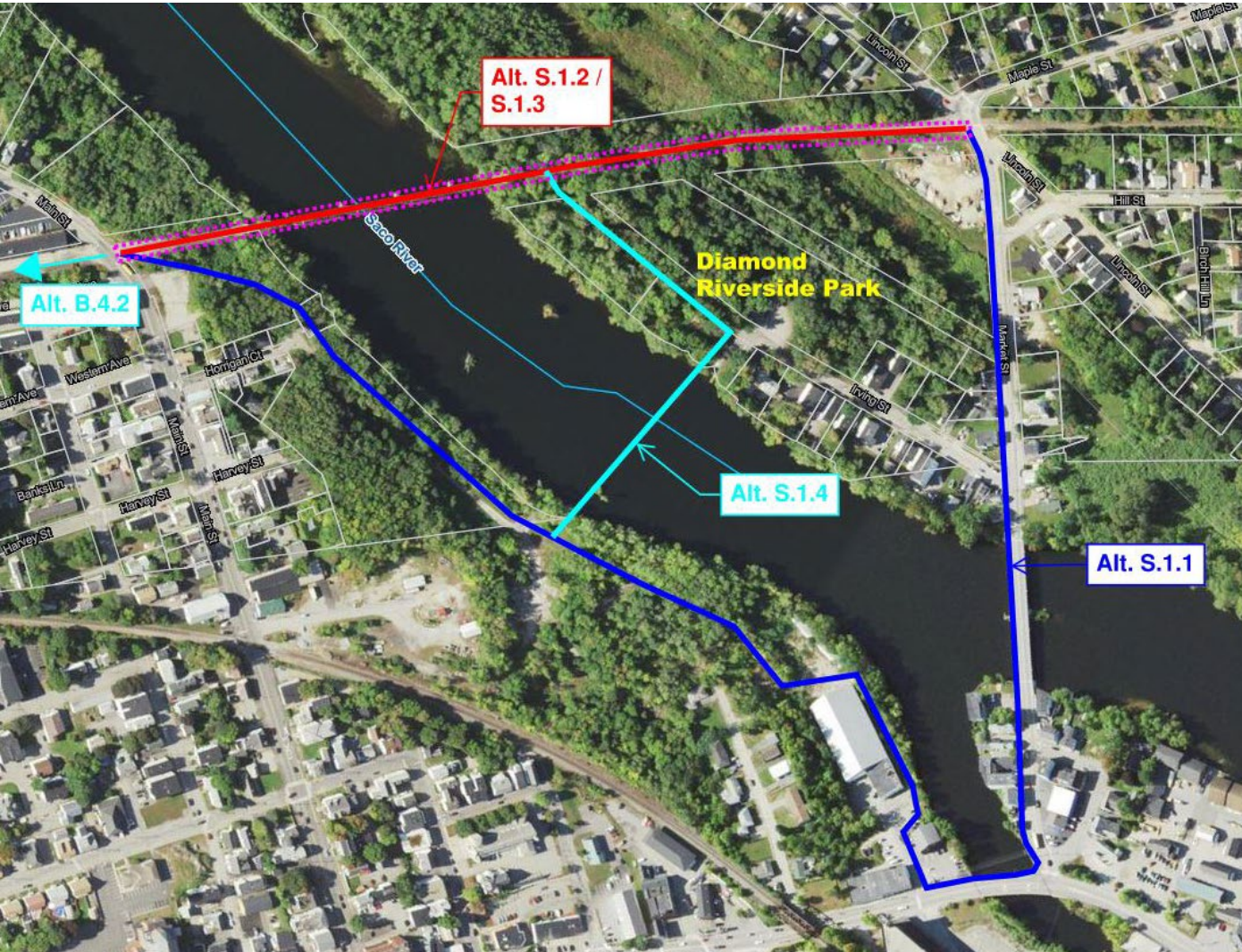
Feature Color Coding:	More Desirable	Neutral	Less Desirable	Not Considered
-----------------------	----------------	---------	----------------	----------------

**Recommended**

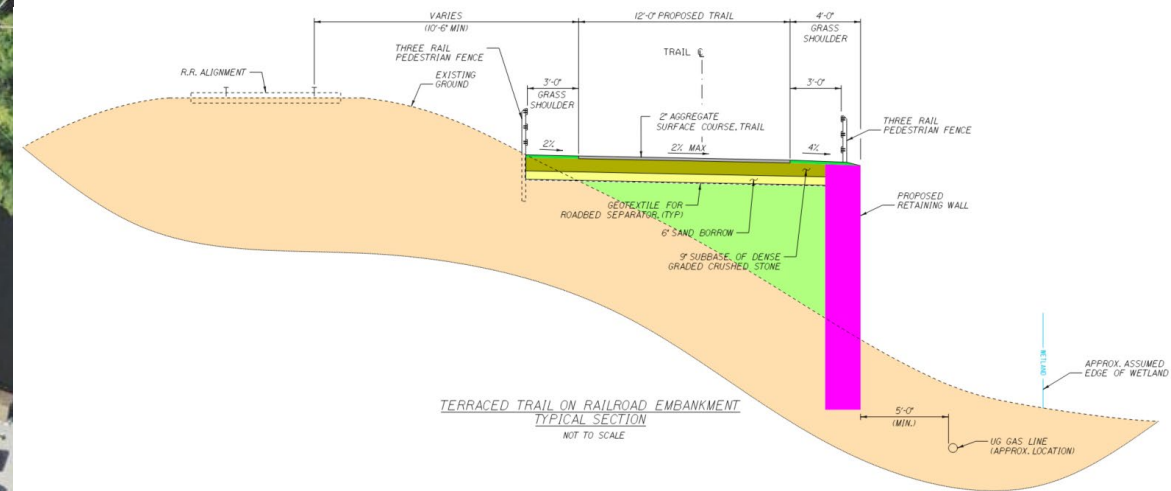
- Alternative category ratings are relative to the section being analyzed
- The Saco Freight Rail line is an active RR corridor
- Although the removal of the Saco Freight Rail line for the Eastern Trail was initially evaluated, it has been dismissed from the evaluation at this time due to the overwhelming desire for the rail to continue servicing that line.

# Section S.1

(Saco River Crossing ~0.4 Miles)

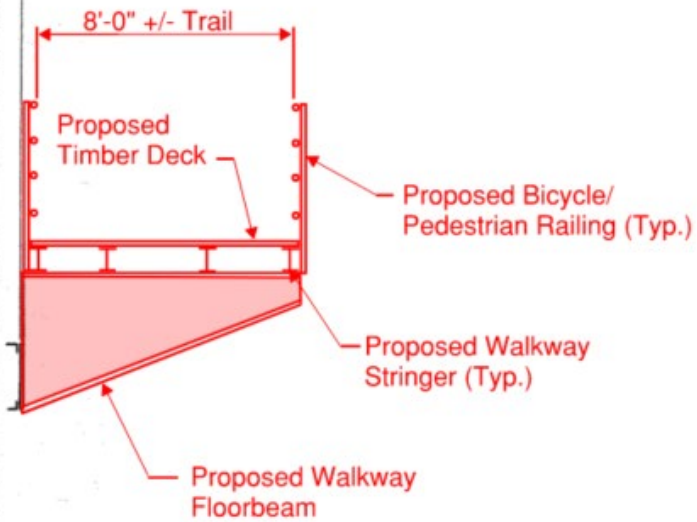
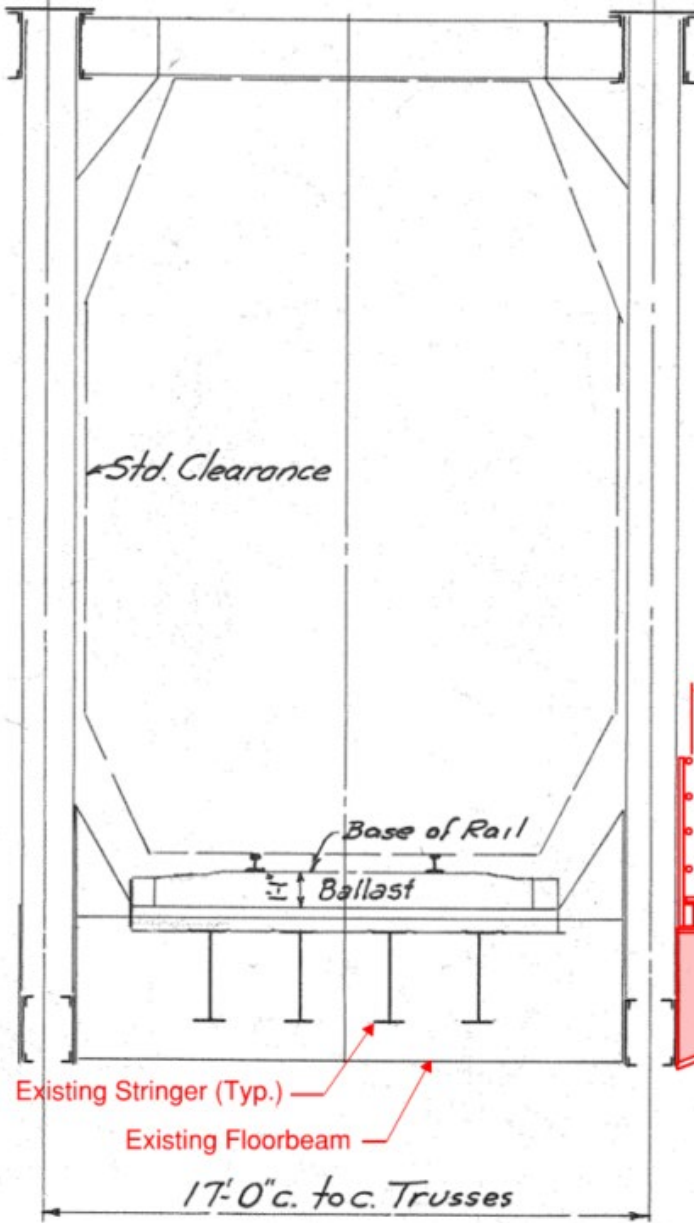


Aspect	Alt. S.1.1 - On-Road Connection	Alt. S.1.2 - Freight Rail with Trail on Existing Bridge	Alt. S.1.3 - Remove Freight Rail for Trail on Existing Bridge	Alt. S.1.4 - New Trail Bridge
Satisfies Purpose & Need	No	Yes	Yes	Yes
Safety & Mobility	Moderate improvement Shared roadway options	Dedicated path for bikes/peds	Dedicated path for bikes/peds	Dedicated path for bikes/peds
ROW, Env. & Utility Impacts	Possible ROW Impacts Anticipated	Moderate Environmental Impacts Anticipated	Freight Rail Line Services Eliminated	Major Environmental Impacts
Constructability	Minor Effort	Moderate Effort	Moderate Effort	Major Effort
Estimated Cost	Low	High	Moderate	Very High



# Section S.1

(Saco River Crossing ~0.4 Miles)

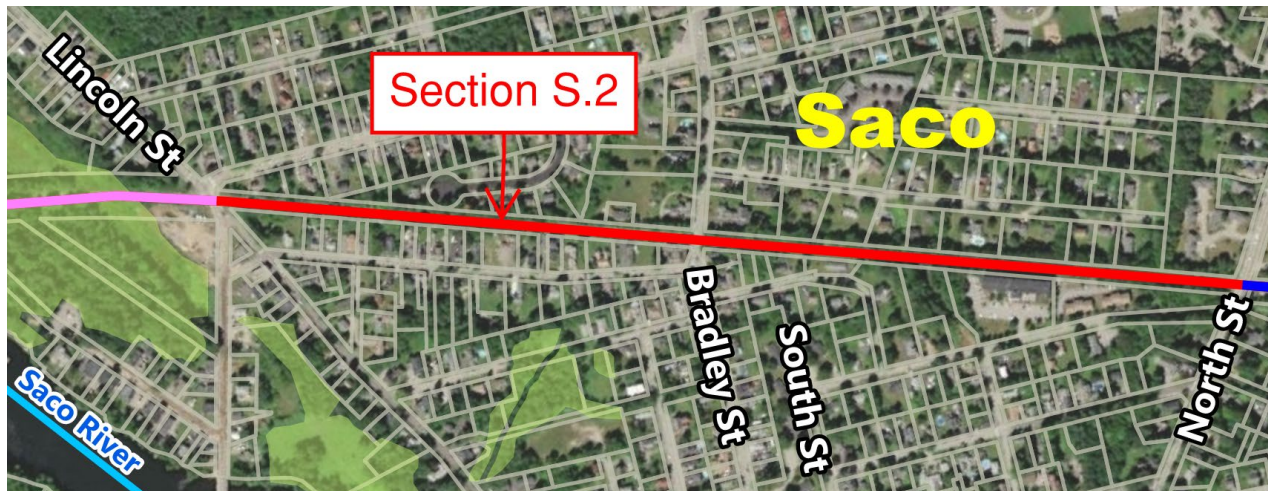
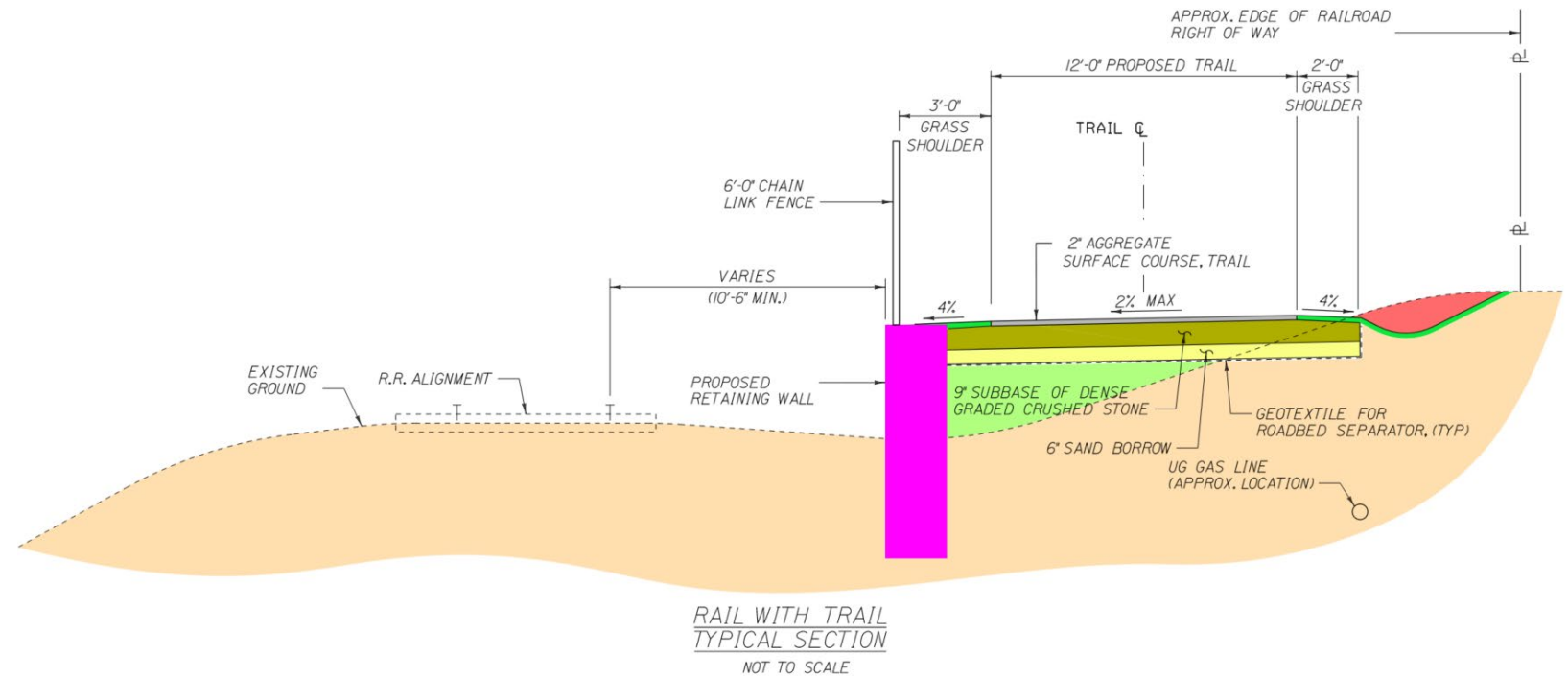


CSX Rail with National Park Service Trail in Harper's Ferry, West Virginia



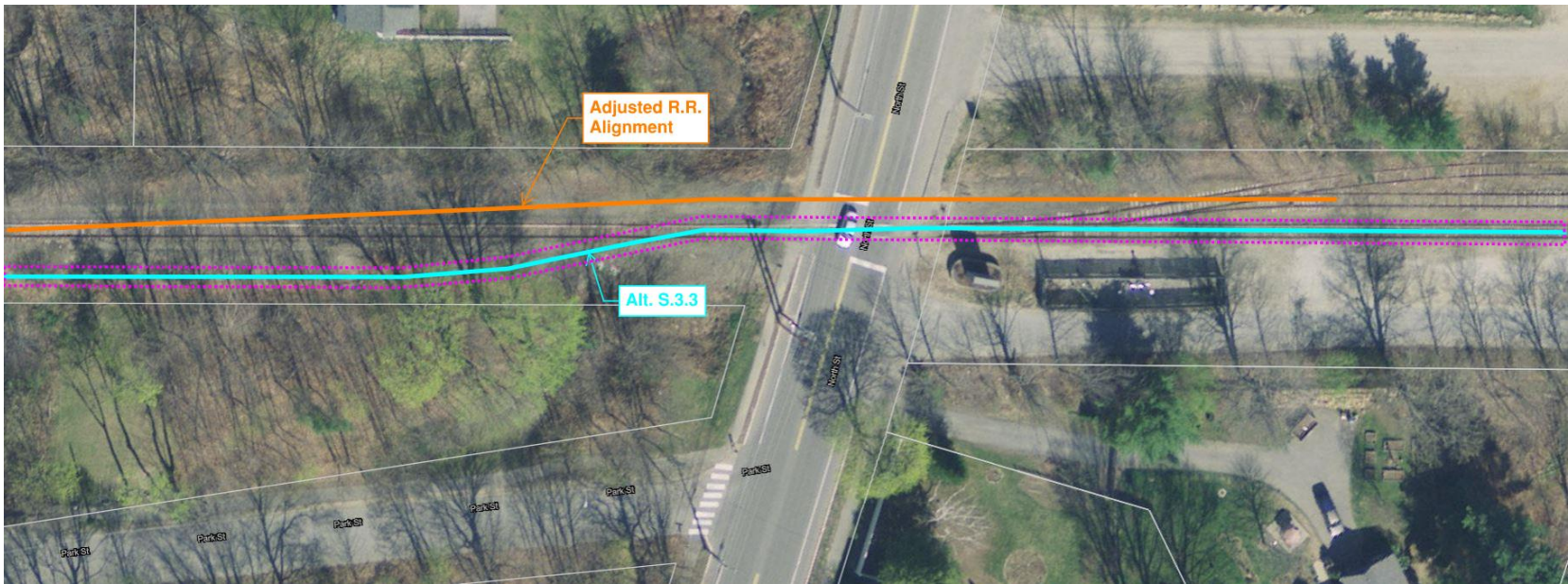
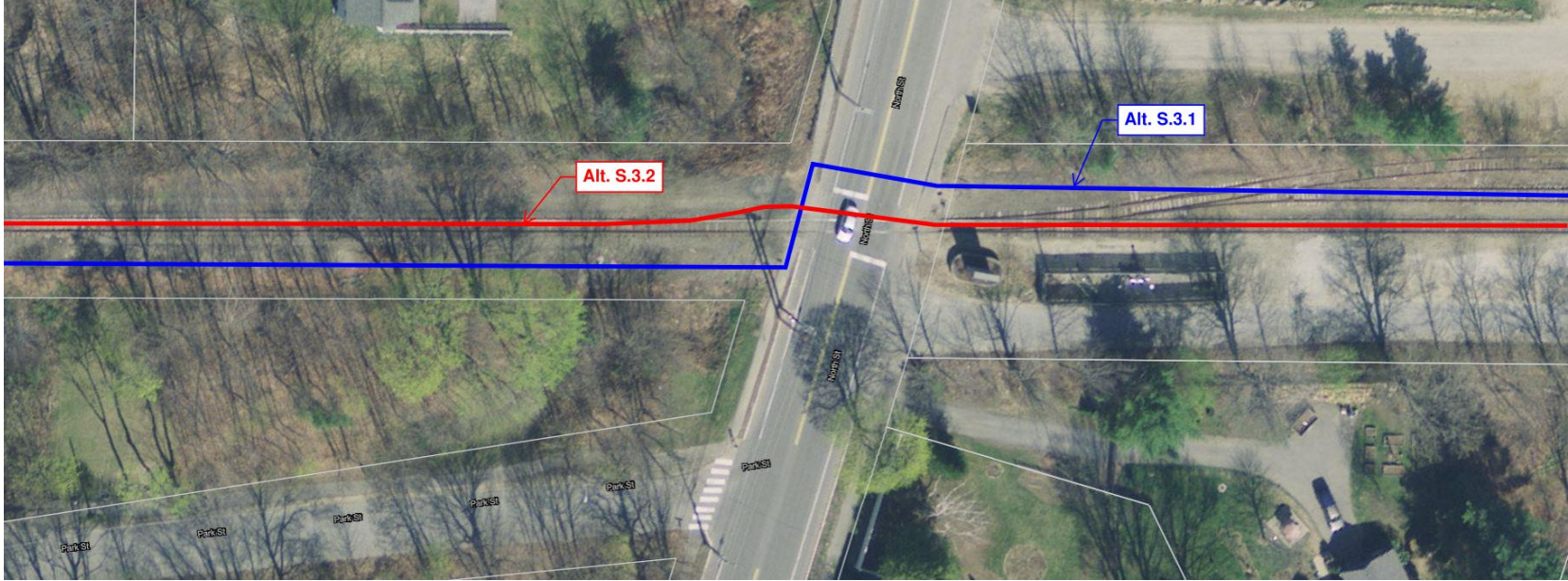
# Section S.2

(Lincoln Street to Bradley Street to North Street ~0.7 Miles)



# Section S.3

(North Street Crossing)

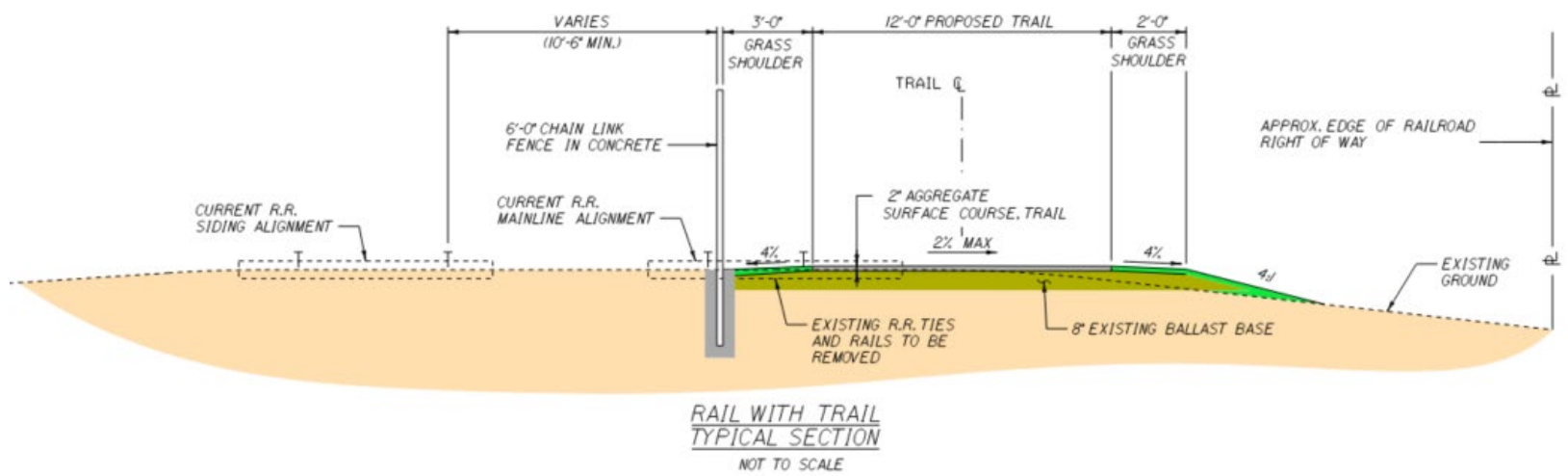
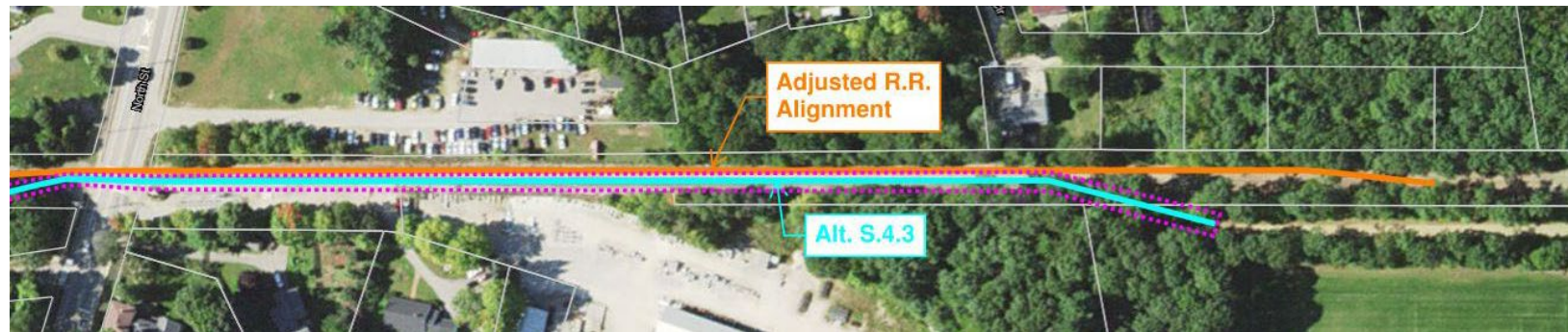


Aspect	Alt. S.3.1 - Railroad Crossing	Alt. S.3.2 - Remove Freight Rail for Trail	Alt. S.3.3 - Re-align Freight Rail
Satisfies Purpose & Need	Yes	Yes	Yes
Safety & Mobility	Dedicated path for bikes/peds with additional RR crossings	Dedicated path for bikes/peds	Dedicated path for bikes/peds
ROW, Env. & Utility Impacts	None Anticipated	Freight Rail Line Services Eliminated	Freight Rail Line Services Impacted
Constructability	Minor Effort	Moderate Effort	Major Effort
Estimated Cost	Low	Moderate	High



# Section S.4

(North Street to Thornton Academy ~0.25 Miles)



Aspect	Alt. S.4.1 - Freight Rail with Trail to the West	<del>Alt. S.4.2 - Remove Freight Rail for Trail</del>	Alt. S.4.3 - Re-align Freight Rail
Satisfies Purpose & Need	Yes	<del>Yes</del>	Yes
Safety & Mobility	Dedicated path for bikes/peds with additional RR crossings	<del>Dedicated path for bikes/peds</del>	Dedicated path for bikes/peds
ROW, Env. & Utility Impacts	None Anticipated	<del>Freight Rail Line Services Eliminated</del>	Freight Rail Line Services Impacted
Constructability	Minor Effort with Additional RR Crossing	<del>Moderate Effort</del>	Minor Effort
Estimated Cost	Low	<del>Moderate</del>	Moderate



# Opinion of Costs

## Biddeford Segment – West Cole Road to Main Street (~1.7 Miles)

- Section B.1 – Alt. B.1.3 (Rail with Trail ~0.52 Miles) = \$1,150,000
  - *Section B.1b – Alt. B.1.1 (Roadway Corridor Connection) = \$1,000,000*
- Section B.2 – Alt. B.2.1 (Trail on Utility Corridor ~0.15 Miles) = \$160,000
- Section B.3 – Alt. B.3.1 (Westmore Avenue Connection ~0.55 Miles) = \$475,000
- Section B.4 – Alt. B.4.2 (Freight Rail with Trail ~0.45 Miles) = \$545,000

**Biddeford Segment Subtotal = \$2,330,000**

## Saco Segment – Main Street in Biddeford to Thornton Academy

- Section S.1 – Alt. S.1.2 (Rail with Trail on Existing Bridge ~0.4 Miles) = \$4,420,000
- Section S.2 – Alt. S.2.1 (Rail with Trail ~0.7 Miles) = \$1,650,000
- Section S.3 – Alt. S.3.3 (Re-align Freight Rail for Trail) = \$450,000
- Section S.4 – Alt. S.4.3 (Re-route Freight Rail to Existing RR Siding ~0.25 Miles) = \$550,000

**Segment 2 Subtotal = \$7,070,000**

**Total Cost of Recommended Trail Alternatives = \$9,400,000**

- Conceptual order of magnitude costs based on 2021 \$\$
- Includes assumptions for **PE, Construction, and CE**
- Does not include ROW, permitting, or mitigation costs

# Public Input and Discussion



# Focus of Tonight's Meeting

...help us identify and understand local concerns and opportunities in relation to the recommended alternatives presented



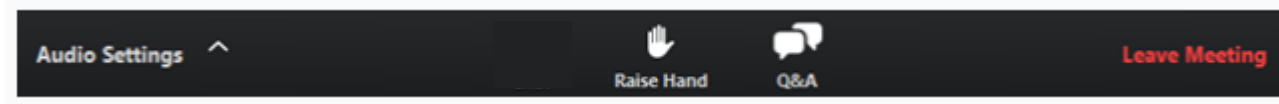
# Public Input / Discussion

**Study's purpose** is to *evaluate and analyze **connectivity** alternatives for the Eastern Trail in **Biddeford** and **Saco**.*

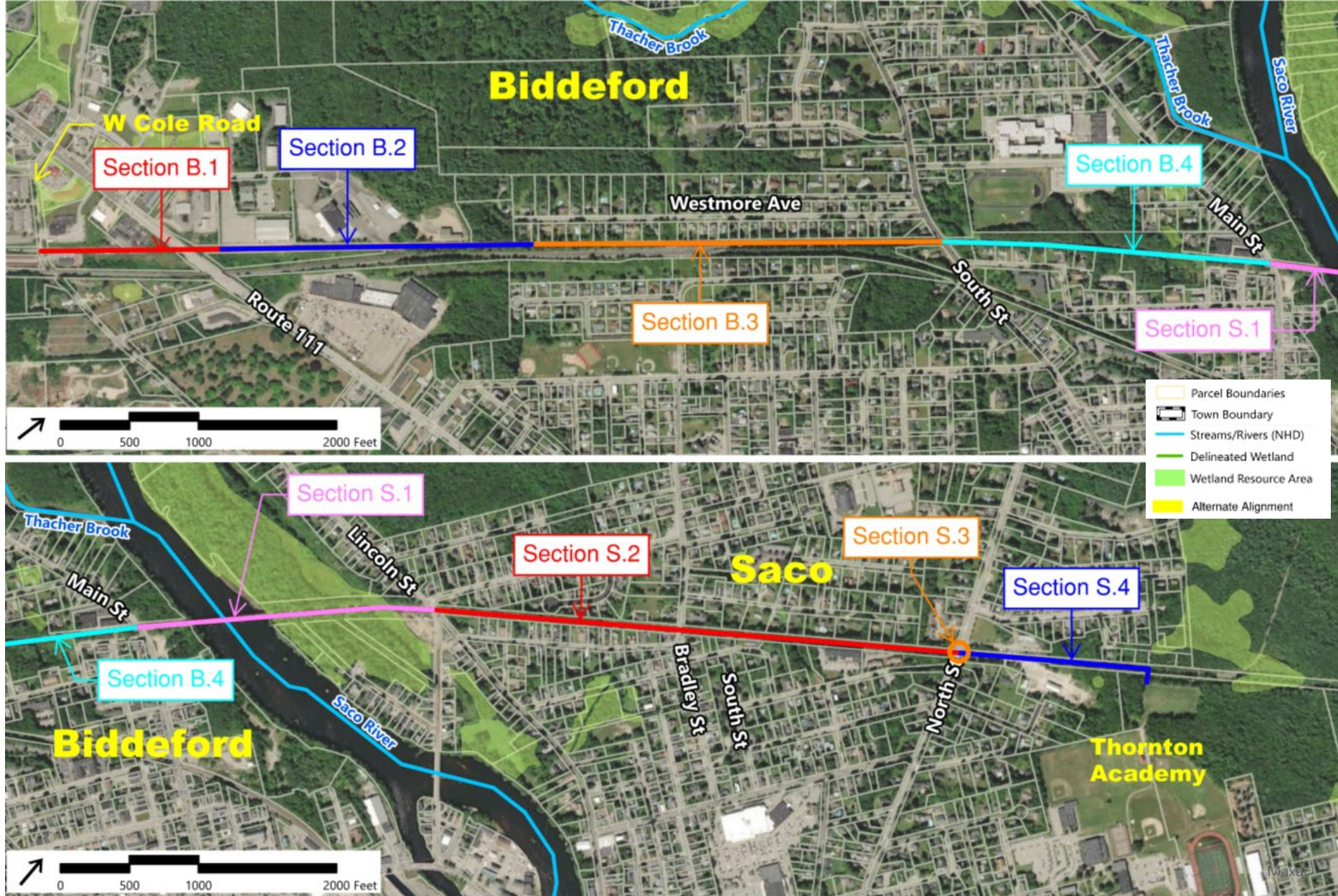
1. What else can you think of to add to tonight's discussion and/or contribute to the overall success of this project? (for example...)
  - Other ideas/options that should be considered
  - Location specific information
  - Local issues and concerns we should be aware of
  - Potential future developments that should be considered
  - Any other relevant information...
2. What are your hopes and or goals for this study?
3. Any concerns, questions, or comments related to the study?

# Meeting Logistics

- All attendees muted
- Lots of time for Questions and Answers after the presentation
- Raise/lower your “Hand” to ask a question “live”



- Q&A – type questions/comments directly into the box
- Phoning in...press \*9 to raise your hand
- This meeting is being recorded and will be posted on the Eastern Trail website, along with the presentation.
- Email comments: Jon Kachmar, [jon.kachmar@eastertrail.org](mailto:jon.kachmar@eastertrail.org)



**Bicycle/Pedestrian Trail Connectivity Feasibility Study – Corridor Breakout**  
 Biddeford and Saco, Maine



# Next Steps

## **Public Meeting Follow up:**

- Collect all feedback and ideas from tonight's meeting  
(All comments provided prior to, during, and after the meeting)
- Prepare a summary of all comments for review by the TAC

## **Remaining Project Schedule:**

- April '22 – Prepare and Submit Final Report





# Biddeford/Saco Bike/Ped Trail Feasibility Study

Public Meeting #2

March 8, 2022

**Thank you for participating!**

**Please send any additional questions or comments to:**

**Jon Kachmar, [jon.kachmar@eastertrail.org](mailto:jon.kachmar@eastertrail.org) (860) 227-0914**

